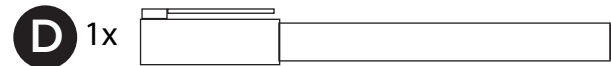
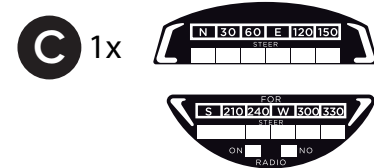
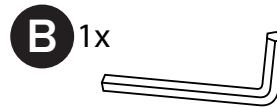
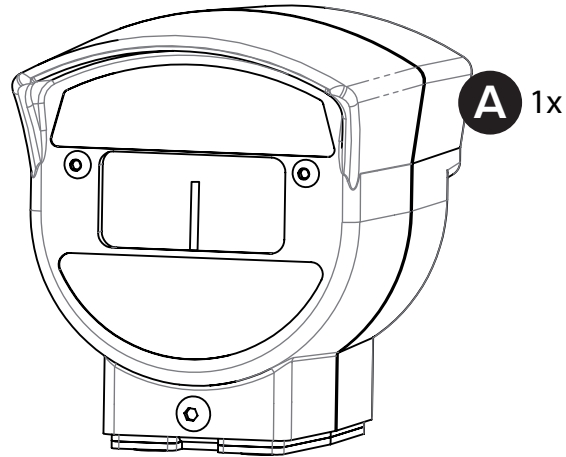


COMPOSS

USER'S MANUAL

Rev. 1.2 - February 2020



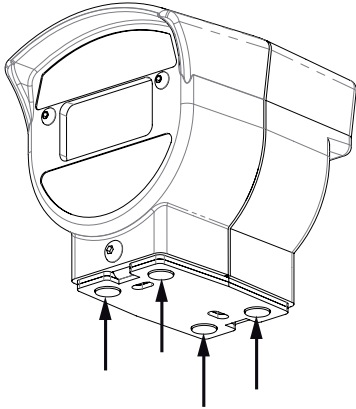
1. PACKAGE LIST

- A) COMPOSS
- B) Allen key
- C) Replacement tags
- D) Fine tip marker

2. ASSEMBLY

Mount on an iron surface

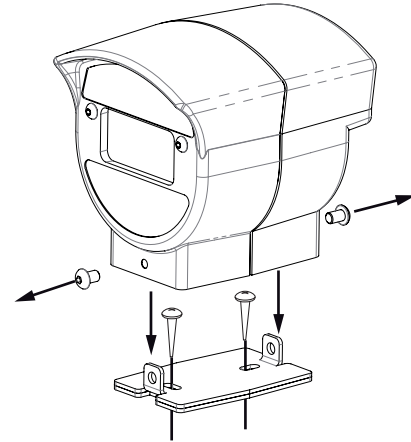
COMPOSS has 4 magnets to get secured on the panels that have a magnetic metal surface.



Mount on a non iron surface

Remove the compass' bottom plate, unscrewing the 2 screws: one in the front and one in the back, using the allen key (B).

Screw using 2 screws (not included) the bottom plate to desired surface. Re-assemble the compass with the 2 screws previously removed.



If you cannot or don't want to screw on the surface where you want to place the compass, you can use double sided adhesive tape or adhesive velcro (not included).

Apply the adhesive on the bottom plate without removing it from the compass.

Connect the USB cable to the computer where the flight simulator software is running.

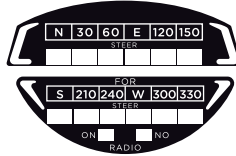
3. ADJUSTMENTS

FRONT LABELS

Aircraft may have an effect on the magnetic values of the compass.

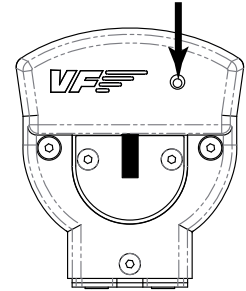
Therefore, you have a marker (D) to be able to write these variations on the front labels.

You also have a replacement set of labels (C), in case you decide to change the simulated aircraft.



BACKLIGHT

A backlight control button is located at the back of COMPOSS device allowing you to turn the backlight ON or OFF as per convenience.



4. CONFIGURATION ON FLIGHT SIMULATION SOFTWARE

As the COMPOSS control interacts with any computer as a normal HID device (Joystick), this makes it compatible with any FLIGHT SIMULATOR software. The following tables tell how to configure the COMPOSS on the most popular FLIGHT SIMULATOR software, FSX-Prepar3D and X-Plane.

COMPOSS Configuration on FSX/PREPAR3D

INSTALLATION:

1. Connect your COMPOSS device to a free USB port of the FSX/PREPAR3D computer.
2. Download and extract **VF-ControlPanel** software in your Desktop folder. Available at: www.virtual-fly.com/en/downloads
3. Download and install FSUIPC module in your FSX/PREPAR3D. Registration is not required. Available at: www.virtual-fly.com/en/downloads

ACTIVATION:

1. Execute VF-ControlPanel software and check if **COMPOSS device estatus is "Connected"**.
(Note that VF-ControlPanel software has to keep running while using COMPOSS device.)
2. Execute FSX/PREPAR3D and check on VF-ControlPanel if **FSX/P3D status is "Connected"**.
3. Load a flight and **check that Compass value** indicated in the aircraft match with the value indicated on COMPOSS device.

COMPOSS Configuration on X-Plane 11

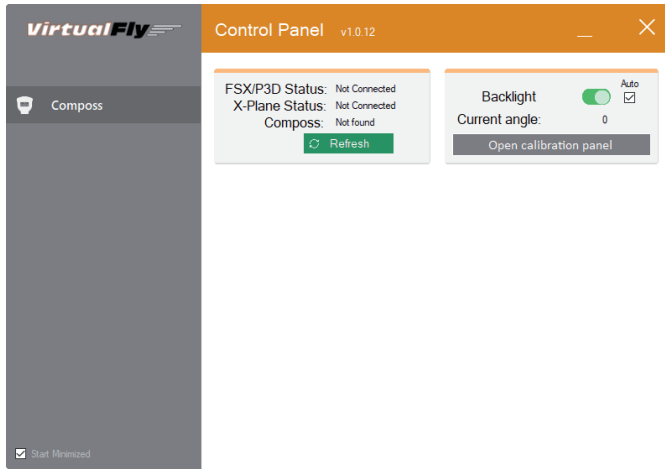
INSTALLATION:

1. Connect your COMPOSS device to a free USB port of the X-Plane computer.
2. Download and extract **VF-ControlPanel** software in your Desktop folder. Available at: www.virtual-fly.com/en/downloads

ACTIVATION:

1. Execute VF-ControlPanel software and check if **COMPOSS device estatus is "Connected"**.
(Note that VF-ControlPanel software has to keep running while using COMPOSS device.)
2. Execute X-Plane 11 and load a flight
3. **Check if Compass value** indicated on X-Plane aircraft match with the value indicated on COMPOSS device.

5. VF-CONTROL PANEL



- Refresh: Performs a device and software scan.
- Backlight: Control for Compass backlight activation and deactivation. When "Auto" checkbox is checked, COMPOSS backlight is controlled according to the master battery status and battery voltage.
- Open calibration panel: A guided step by step calibration process for Compass calibration.
Note that Compass device is calibrated in factory and this process is not required unless Compass is not properly calibrated.

6. TROUBLESHOOTING

PROBLEM	SOLUTION
1. VF-ControlPanel does not show "Connected" in COMPOSS Status although COMPOSS is plugged in the computer.	Make sure COMPOSS device is recognized by the computer, go to "Control panel"->"Devices and printer". Virtual Fly - COMPOSS device should be shown there. If it is not shown, try connecting the COMPOSS to a different USB port or through a powered USB HUB.
2. VF-ControlPanel does not show "Connected" in FSX/P3D Status.	Make sure you have FSUIPC module installed on FSX/PREPAR3D and FSX/PREPAR3D is running when you check this point.
3. When COMPOSS device is plugged in a USB port, after find the initial position, the position shown is not "North".	COMPOSS is not properly calibrated. Execute VF-ControlPanel, go to "open calibration panel" and follow the instructions for COMPOSS calibration.
4. The indicated compass position shown in the FSX/PREPAR3D or X-Plane 11 aircraft differs from the position indicated on COMPOSS device.	Make sure you are comparing Compass instrument in the FSX/PREPAR3D or X-Plane 11 aircraft and not the Gyro/HSI instrument. If the position differs, execute VF-ControlPanel, go to "open calibration panel" and follow the instructions for COMPOSS calibration.